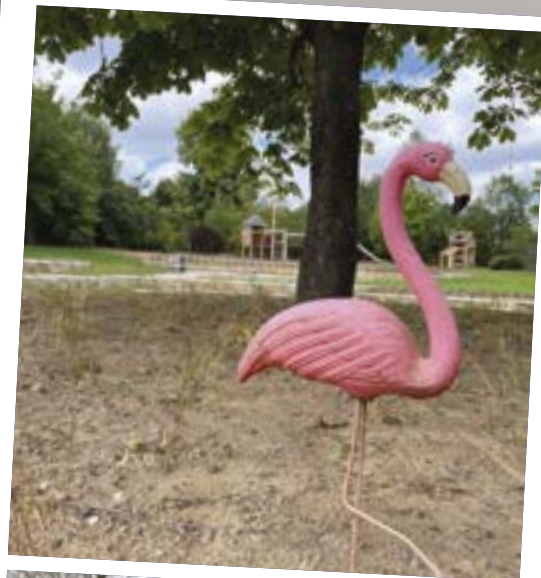




Sandweiler School Report 2022/2023





The "Schoulbuet" is a publication of the Sandweiler municipal administration under the responsibility of the college of the mayor and aldermen, which is published once a year. The "Schoulbuet" is distributed free of charge to all households in Findel and Sandweiler.

Coordination and contact person:
Susana Dinis Martins, Sonja Lang

Editors:
Susana Dinis Martins, teachers

Photos / Illustrations:
Susana Dinis Martins, teachers

Design and production:
Graphicube s.à r.l.

Printed by:
Imprimerie Reka stock corporation (s.a.)

Publication date:
September 2022

Translation done by:
Traducteo

© Administration communale de Sandweiler - Tous droits réservés



A Word from the Mayor

Dear pupils, dear parents,

The summer holidays are slowly coming to an end and the beginning of the new school year is fast approaching. Our thoughts are thus turning to the new school year which will start on Thursday, 15 September 2022.

In order to familiarize you with the new school year, the "Sandweiler Schoulbuet" provides you with practical and useful information about school life. This is an interesting booklet for pupils and their parents, which has been distributed for many years, to households in the municipality of Sandweiler, before the beginning of each school year.

After two eventful years, we hope to return to full normality in school life.

Over the last few weeks, as usual, the people in charge of the school and the childcare centre have been taking care of all of the necessary preparations to enable the children to begin the 2022/2023 school year in optimal conditions. Our teaching staff, in collaboration with the educators in the educational facilities, have an extremely important task and a great responsibility, because primary education is a necessary and essential foundation that helps children to build their future life.

For this reason, it is also very important for you, dear parents, to take an active part in your children's school life and work in close collaboration with the people in charge of the school and the childcare centre.

In the new 1st year "Haus vun de Kanner" building, emphasis is placed on close collaboration between the school and the childcare centre. It is important for children to feel comfortable and to gain a wide range of experience. The building and the new adventure playground, which has recently been brought into use, are tailored to meet children's needs.

On behalf of the college of aldermen, I would like to thank the teachers, the educators, the representatives of the regional education directorate and the members of the School Commission, the committee of Piwitsch a.s.b.l., the parents' representatives and the municipal personnel for their able and precious collaboration.

We would also like to warmly thank the parents' association, whose members devote a great deal of effort every year to organizing a wonderful school fete for the children.

The college of aldermen wishes you, the children, an excellent and exciting year, full of success and new adventures.

Simone Massard-Stitz
Mayor



Contents

Legal information _____ 2

A Word from the Mayor _____ 3

Contents _____ 4

Good to Know

Good to Know _____ 5

School Calendar 2022/ 2023 2023 _____ 8

Start of the school year _____ 9

Grants and Allowances _____ 9

School Transport - Pédibus _____ 10

Municipal Infrastructures _____ 12

Inauguration of the New School
"Haus vun de Kanner" _____ 14

School Organization - 2022/2023

Cycle 1 – Early childhood and preschool education _____ 16

Cycle 2 _____ 20

Cycle 3 _____ 22

Cycle 4 _____ 24

"Léierstiffchen" _____ 26

General Information

General Information _____ 28

The Regional Directorates _____ 31

The Education System in Luxembourg _____ 31

The "Um Weier" School Playground _____ 33

Special features at the Sandweiler School

Social Projects at Sandweiler _____ 34

A New Class for Annabelle,
the Teaching Assistant Dog _____ 38

iPads at School _____ 39

The School Development Plan (SDP) _____ 40

Extracurricular Supervision _____ 41

The School Multimedia Library _____ 42

Extracurricular Supervision

Childcare centre (Maison relais) _____ 43

Piwitsch Day Nursery _____ 47

Extracurricular supervision
by Piwitsch non-profit organization (a.s.b.l) _____ 47

LASEP _____ 48

Associations page _____ 49

Activities 2021/2022

Activities with the Police _____ 53

Sports Day _____ 54

The School fete _____ 55

Excursions and Camps _____ 56

Class Photos 2021/2022 _____ 58

Departure of Cycle 4.2 Pupils _____ 66

Practical Information _____ 67



Good to Know

Supervision of pupils

At the beginning of the school year, the teachers of years 2 to 4 draw up a supervision schedule. 5 to 6 teachers supervise the children in the playground, for 10 minutes before the beginning of classes, and for ten minutes after the end of classes. 6 teachers are also present at playtime.

In the 1st year, all of the teachers supervise the pupils in the playground.

Absences, exemptions and compulsory school attendance

Compulsory school attendance

In Luxembourg, school attendance is compulsory between 4 and 16 years of age. All children residing in Luxembourg having reached 4 years of age before 1st September must attend school.

For children not attending primary school in Sandweiler, or enrolled in a private school, an enrolment certificate must be submitted to the municipal secretariat at the latest eight days after the beginning of the school year.

Absence from class

Notice of all absences must be given to the appropriate teaching staff by the child's legal representative, on the day of absence before 8.15 a.m.

The only legitimate reasons for absence are illness of the child, the death of a close relation or a case of force majeure. If the pupil is absent for more than three days, a medical certificate is compulsory.

Requests for exemption

Exemptions from attendance may be granted exceptionally for legitimate reasons on request from the parents.

Exemptions may be granted:

- by the permanent class teacher, for periods not exceeding one day.
- by the Chair of the comité d'école (school committee) for periods of two to five consecutive days.

Procedure: All requests for exemption from attendance must be duly justified and contain: the child's name, the permanent class teacher's name, the reason for the request and the date for which exemption is requested.

A signed, written request shall be sent by the child's parent or guardian within reasonable time.

Contacting the school

You can contact the school by e-mail at the following address:

schoul@sandweiler.lu

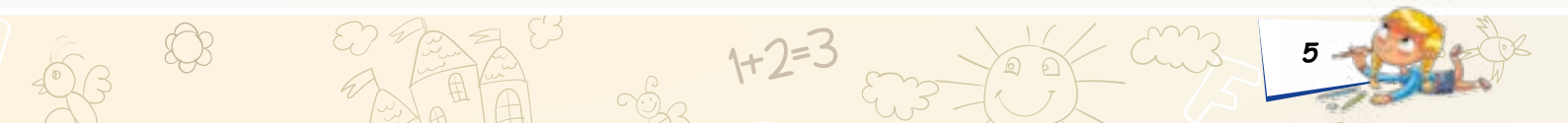
www.sandweiler-schoulen.lu

School materials

The pupils' school textbooks are provided free of charge by the municipality of Sandweiler. The rest of the school materials (notebooks, pencils etc.) are provided by the parents.

Swimming lessons

Swimming lessons are organized for pupils in cycles 2 to 4. These lessons take place at the "Coque" in Luxembourg-Kirchberg and are given by the teachers. Lessons for pupils who do not know how to swim in cycles 2 and 3 are given by Vicky Komes, a swimming instructor.





Provisions in case of cancellation of lessons due to bad weather or force majeure

In case of cancellation of lessons parents will be informed by the Ministry by the following means:

- ➊ through the media (RTL, Eldorado, etc.);
- ➋ via the Sandweiler municipality's sms2citizen service (for registered parents only).

In case of cancellation of lessons by the Sandweiler municipality parents will be informed by the following means:

- ➊ via the sms2citizen service provided by the Sandweiler municipality (for registered parents only).

General provisions in case of cancellation of lessons:

- ➊ During school hours, a reception service will be provided by the teachers at the school.
- ➋ A telephone hotline will operate on the number 621 50 24 21 (chair of the school committee) between 7.00 and 8.00 a.m. and on the number 35 97 11-1 (municipality) from 8.15 a.m.

Reception at the childcare centre:

- ➊ There will not be any Pédibus group walking to school.
- ➋ Reception at the childcare centre will be provided from 7.30 to 8.00 a.m. for enrolled children.

If you have not yet registered for the sms2citizen service, you can download the registration form on the school website www.sandweiler-schoulen.lu and send it to the municipality.

Contacting the school

In case of questions concerning teaching or in case of any problems, parents can make an appointment, in the following order:

1. The permanent class teacher/person in charge of lessons
2. The chair of the comité d'école (School Committee)
3. The head of the regional education directorate



Dear Madam or Sir.....

I the undersigned..... ask you to please excuse the absence of my child.....

- on..... (day and date)
- on..... (day and date) from..... to..... (time)
- from..... (day and date) to..... (day and date)

Reason for absence:

Best regards,

Signature:

Notification/explanation of absence
(model)



School Calendar 2022/2023

September 2022						
M	T	W	T	F	S	S
			1	2	3	4
5	6	7	8	9	10	11
12	13	14	15	16	17	18
19	20	21	22	23	24	25
26	27	28	29	30		

October 2022						
M	T	W	T	F	S	S
					1	2
3	4	5	6	7	8	9
10	11	12	13	14	15	16
17	18	19	20	21	22	23
24	25	26	27	28	29	30
31						

November 2022						
M	T	W	T	F	S	S
	1	2	3	4	5	6
7	8	9	10	11	12	13
14	15	16	17	18	19	20
21	22	23	24	25	26	27
28	29	30				

The day after First Communion, the classes of the pupils concerned will function normally. However, the teachers of these classes will accept any written excuses concerning the pupils' absences during the morning.

Classes of the four cycles of primary education will no longer be suspended on the day of pilgrimage to Notre-Dame Cathedral, Luxembourg. However, the teachers of these classes will accept any written excuses concerning the pupils' absences during the morning.

December 2022						
M	T	W	T	F	S	S
			1	2	3	4
5	6	7	8	9	10	11
12	13	14	15	16	17	18
19	20	21	22	23	24	25
26	27	28	29	30	31	

January 2023						
M	T	W	T	F	S	S
						1
2	3	4	5	6	7	8
9	10	11	12	13	14	15
16	17	18	19	20	21	22
23	24	25	26	27	28	29
30	31					

February 2023						
M	T	W	T	F	S	S
		1	2	3	4	5
6	7	8	9	10	11	12
13	14	15	16	17	18	19
20	21	22	23	24	25	26
27	28					

March 2023						
M	T	W	T	F	S	S
		1	2	3	4	5
6	7	8	9	10	11	12
13	14	15	16	17	18	19
20	21	22	23	24	25	26
27	28	29	30	31		

April 2023						
M	T	W	T	F	S	S
					1	2
3	4	5	6	7	8	9
10	11	12	13	14	15	16
17	18	19	20	21	22	23
24	25	26	27	28	29	30

May 2023						
M	T	W	T	F	S	S
1	2	3	4	5	6	7
8	9	10	11	12	13	14
15	16	17	18	19	20	21
22	23	24	25	26	27	28
29	30	31				

June 2023						
M	T	W	T	F	S	S
			1	2	3	4
5	6	7	8	9	10	11
12	13	14	15	16	17	18
19	20	21	22	23	24	25
26	27	28	29	30		

July 2023						
M	T	W	T	F	S	S
					1	2
3	4	5	6	7	8	9
10	11	12	13	14	15	16
17	18	19	20	21	22	23
24	25	26	27	28	29	30
31						

■ School holidays
■ Public holidays





Start of the School Year, 15 September 2022



Start of the school year

Cycle 1 – early childhood:

Reception of children and their parents between 8.30 and 9.15 a.m. at the "Haus vun de Kanner" school.

Cycle 1 – preschool education:

Reception of children and their parents at 8.30 at the front of the "Haus vun de Kanner" school.

Cycles 2.1 to 4.2:

Reception of children and their parents at 8.00 a.m. at the "amphitheatre" in the "Um Weier" school playground.



After being welcomed by the representatives of the municipality, all children and their parents are asked to go to their classrooms, where their teachers will welcome them.

The parents' association invites all parents to go to their stall, where they will be served coffee and croissants provided by the municipality.



Grants and Allowances

The municipality of Sandweiler provides a wide range of grants and allowances for its residents.

The grants for children and pupils are as follows:

Allowances for post-primary studies: Completion of studies success allowance = €75.00

School year success allowance = €75

Higher education grants = €250 for the year as whole (winter and summer semester)

Grants for pupils attending the Conservatoire of music in Luxembourg = 50% of enrolment fees (singing or instruments) only for courses not provided by the municipality of Sandweiler

Application forms can be downloaded from www.sandweiler.lu. They must be sent to the college of aldermen with all supporting documents.

Terms and conditions for state aid: <https://www.ugda.lu/fr/ecole-de-musique/enseignement-musical/aide-etatique>



School Transport - Pédibus

In Sandweiler - Pédibus

The Pédibus is a system of walking to school that works on the following principle: a group of children is accompanied by adults on their way to school. Like the traditional bus, the Pédibus picks children up at different locations along a pre-determined route, according to a fixed timetable.

Thanks to use of the Pédibus, the traffic around the schools is reduced, it also decreases pollution and noise.

In addition, walking has a beneficial effect on children's health as well as many other advantages: it promotes socialization, awareness of the dangers of the road and children's independence.

The manager of the childcare centre and her assistant organize this transport and take care of registration.

Pédibus for cycle 1

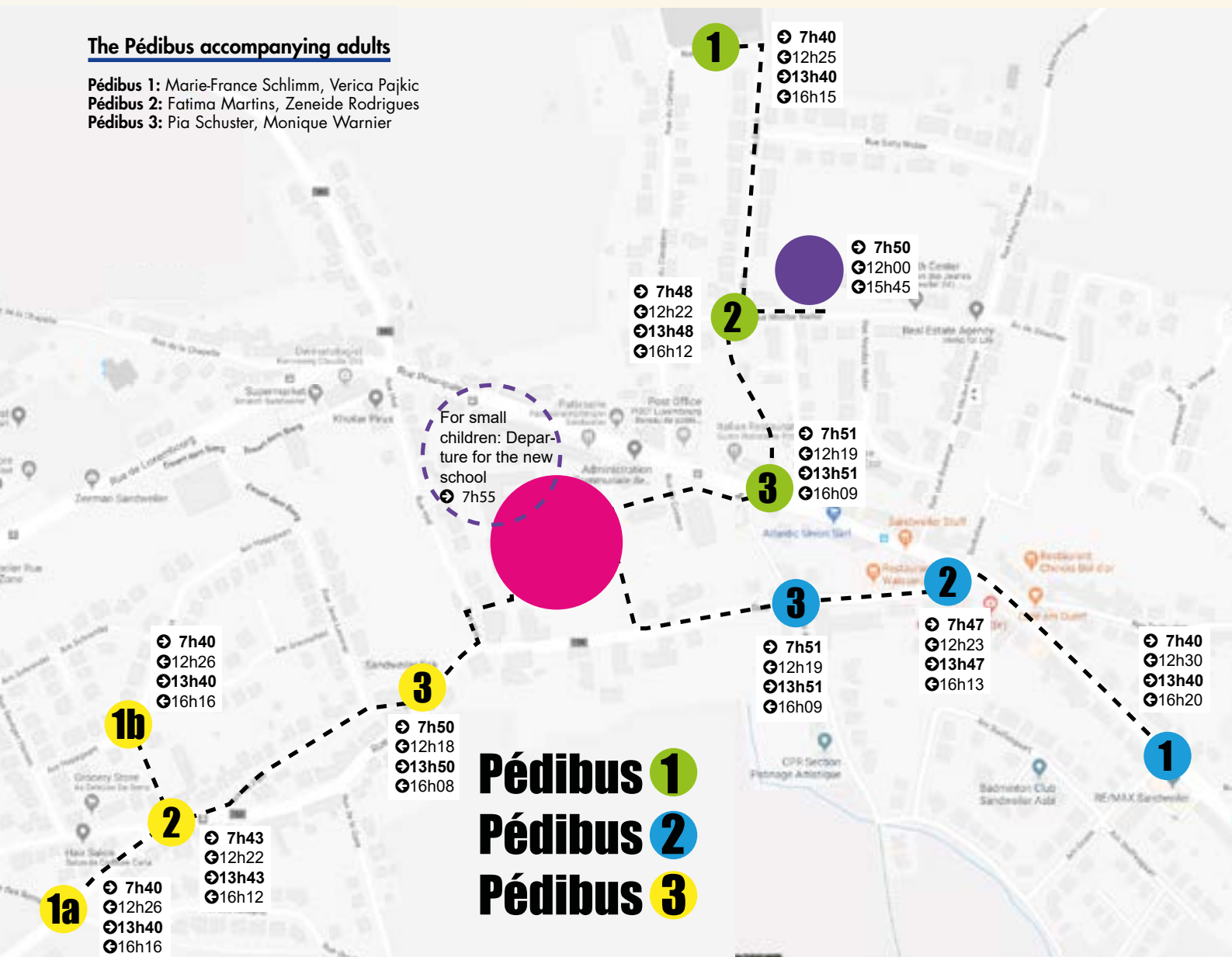
Pédibus 1: A la hauteur du carrefour "rue Dicks /rue Nic Welter", les accompagnateurs du Pédibus 1 se divisent en deux groupes: une personne se rend immédiatement au bâtiment "Haus vun de Kanner" avec les enfants du cycle 1, les autres poursuivent leur chemin vers l'école "Um Weier".

The Pédibus accompanying adults

Pédibus 1: Marie-France Schlimm, Verica Pajkic

Pédibus 2: Fatima Martins, Zeneide Rodrigues

Pédibus 3: Pia Schuster, Monique Warnier





In Findel - School Shuttle Bus Service

A shuttle bus transports pupils of the Sandweiler elementary school between Findel and the school building in Sandweiler.

The transport is free of charge and is provided from Monday to Friday, except in school holiday periods.

The following are entitled to use this shuttle service

- all pupils of cycles 1 to 4 of the Sandweiler elementary school residing in the village of Findel

Parents, grandparents, friends, etc. are not authorized to use the school shuttle service.

An accompanying adult is present in the bus to ensure that the journey is free of any difficulties.

Cycle 1 children coming from Findel are met by the persons in charge of the Pédibus at the "Um Weier building" stop, and accompanied to the new cycle 1 "rue Nic Welter" building. The same applies in reverse order for the return journey.

The Shuttle Bus Timetable

Stop 1
inside
the airport city

○ →

School
"Um Weier"
Sandweiler

**Monday, wednesday
and friday**
07h40 / 13h40
Tuesday and thursday
07h40

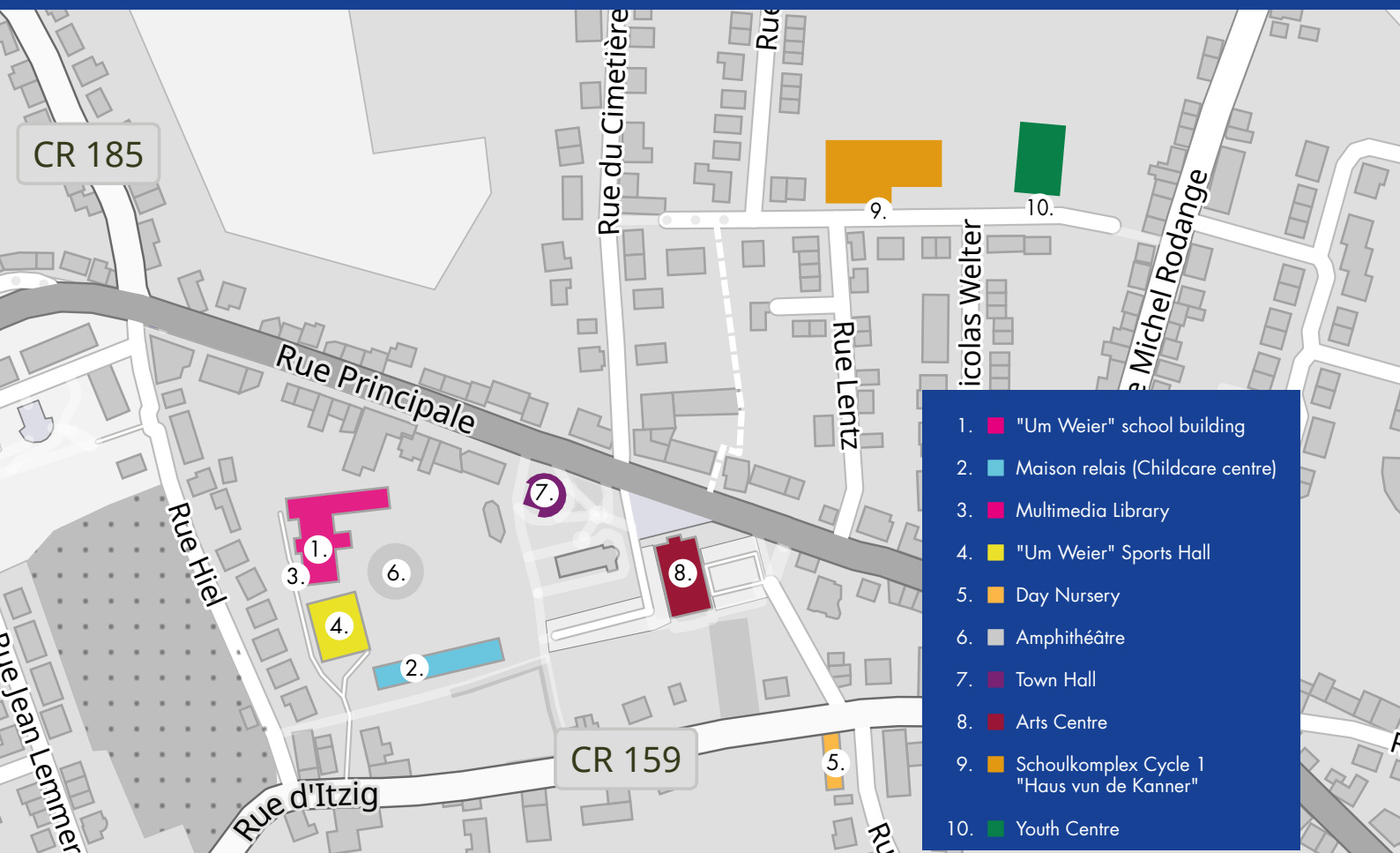
School
"Um Weier"
Sandweiler

○ →

Stop 2
inside
the airport city

**Monday, wednesday
and friday**
12h15 / 16h00
Tuesday and thursday
12h15

Municipal Infrastructures



**School building
"Um Weier"**

- 22 rooms
- 1 multimedia library
- 22 teachers
- 1 educator
- 1 IT room

T: 35 97 11 - 1
F: 35 97 11 - 330

6, rue J.B. Weicker
L-5255 Sandweiler



Luc Clercq
Caretaker
T: 35 97 11 - 309



School Building "Haus vun de Kanner"

- 11 rooms
 - 8 teachers
 - 3 educators
 - 1 educational kitchen
 - 1 movement room
- T: 35 97 11 - 1
3, rue Nicolas Welter
L-5256 Sandweiler



Rafael Camelo Monteiro
Caretaker
T: 621 69 57 89



"Um Weier" Multimedia Library

T: 35 97 11 - 643
6, rue J.B. Weicker
L-5255 Sandweiler



"Um Weier" Sports Hall

T: 35 94 08
6, rue J.B. Weicker
L-5255 Sandweiler



Maison relais (Childcare centre)

T: 35 97 11 - 640 / 641
F: 35 97 11 - 660
6, rue J.B. Weicker
L-5255 Sandweiler



Inauguration of the New "Haus vun de Kanner" School

The inauguration of the new "Haus vun de Kanner" school was held on 11 July. It had been postponed due to the pandemic. Two years after the opening of the school building, the children and their teachers and accompanying adults

were able to show their school to Mr Claude Meisch, the Minister of National Education. After a tour of the building, the Minister cut the inaugural ribbon. This act not only symbolized the opening of a new school, but also the opening of a new adventure playground. Since March, all of the trades had been working tirelessly to finish on time, under the watchful gaze of the children, who were eagerly awaiting being able to have fun at last in this wonderful adventure playground: slides, water games, sand, swings, ... All of the ingredients for the children to have an excellent time in the open air. Many thanks to the municipality of Sandweiler for investing in this exceptional adventure playground.

All of the guests then went to a marquee. The Mayor, and the people in charge of the childcare centre and the school made speeches and explained the functioning of this new school. The children sang two songs before an amazed minister, who did not hesitate to compliment all of the actors for their excellent work in his very acclamatory speech.





School Organization 2022/2023



Cycle 1 Early

Cycle 1 - Early childhood and preschool education

Cycle 1 - early childhood education caters for children between 3 and 4 years of age. In contrast to cycle 1-preschool education, attendance is not compulsory. It is aimed at the child's overall development, and in particular their language development. For children of foreign origin, getting to know the Luxembourgish language constitutes one of the priorities of early childhood education.

Early childhood education emphasizes children's social and psychomotor development, acquisition of language skills through practice and educational and communicative games.

In **cycle 1 – preschool education**, each class caters for children between 4 and 6 years of age. The activities are varied and fall into the following areas: physical, musical, artistic, mathematical, linguistic and scientific activities.

Address

Haus vun de Kanner - Cycle 1
3, rue Nicolas Welter
L-5256 Sandweiler

Timetable

Mon	Tues	Wed	Thurs	Fri	Sat
Reception at school: 7h30 à 8h15					
School: 8h15 - 12h00					free
13h45 - 15h45	free	13h45 - 15h45	free	13h45 - 15h45	





**Cycle 1 early childhood -
classe 1**

↻ **Anik Schumacher-Muller**
Permanent teacher of class 1

Myriam Weyand-Back ↻
Educator of class 1



**Cycle 1 early childhood -
classe 2**

↻ **Claudine Berscheid-Ronkar**
Permanent teacher of class 2

Carole Müller ↻
Tania Mehlen ↻
Educators of class 2



Permanent teacher of class 1 a

↻ **Fabienne Hoffmann-Apel**



Permanent teacher of class 1 b

↻ **Valérie Millim**
Cycle coordinator



Permanent teachers of class 1 c

↻ **Julie Kox**

Li Wenner ↻

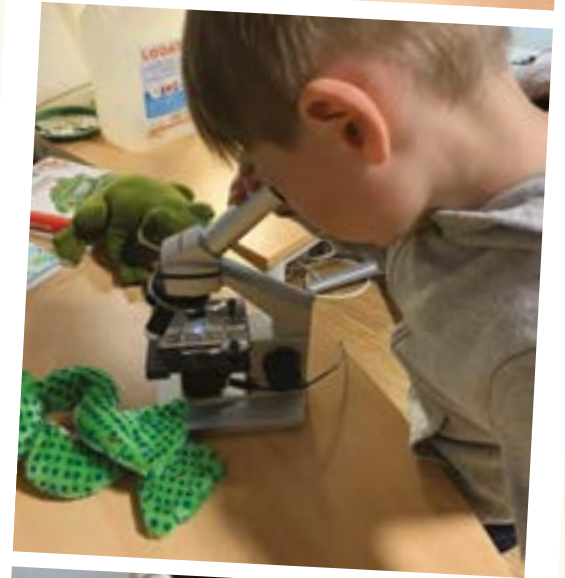


Permanent teacher of class 1 d

↻ **Jennifer Beissel**



↻ **Ken Garnie**
*Deputy
teaching
duties*
Li Wenner
*Deputy teaching
duties* ↻





Cycle 1 Preschool



"Haus vun de Kanner"

In cycle 1, the teachers and the staff of the childcare centre work as a team. This enables both actors to use the different "activity rooms" during and outside of lesson times.

Working concept - Haus vun de Kanner (The Children's House)

The educational team has followed extensive training in order to tailor its working methods to children's needs and thus enable each child to achieve the cycle 1 objectives at their own pace.

The capable child

The new concept is based on the principle of the "capable child". All children have the ability to learn at their own pace.

For this, they need an appropriate and stimulating environment. The rooms and equipment placed at their disposal accompany them like a third educationalist, enabling them to engage in the necessary experimentation to develop their skills.

The teachers and educators accompany the children in this process. They observe, assess and place the necessary equipment at their disposal. The different stages and the children's progress are documented.

Close collaboration between the childcare centre staff and the cycle 1 teachers

The children meet in the gymnasium for morning reception. In the summer, this reception takes place in the playground.

At noon, the educators take over. At these moments of transition, the teachers and educators are present in the rooms at the same time, which enables them to exchange any information about the children.

The educational team meets regularly to exchange information about the children they work with and draw up joint documentation on the children's progress; this enables them to gain an overall view of the child.

The activity rooms

Each activity room deals with a different topic. Children can choose which room they want to go to and thus take part in the activities that interest them. Teachers change rooms according to the type of activity planned for their group.

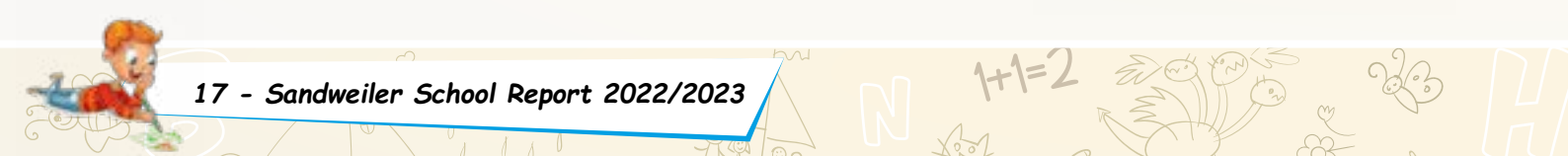
These rooms are used by the pupils during and outside of lesson times.

Address

Haus vun de Kanner - Cycle 1
3, rue Nicolas Welter
L-5256 Sandweiler

Timetable

Mon	Tues	Wed	Thurs	Fri	Sat
Reception at school: 7h30 à 8h15					
School: 8h15 - 12h00					free
13h45 - 15h45	free	13h45 - 15h45	free	13h45 - 15h45	



The Course of a Day

In the morning from 8.15 to 12.00 noon

Reception is organized between 7.30 and 8.15 a.m. in the gymnasium. Pupils are welcomed by their permanent class teacher at the entrance to the building. After a welcome circle and guided class group activities, the pupils choose among the different workshops provided, in order to go to the corresponding room.

The children are free to choose the time they want to spend in the workshops. If they want to change workshop in the course of the morning, they have to put away the equipment they have used and then inform the teacher in charge before going to another workshop.

At 11.45 a.m. the changeover takes place. Children enrolled at the childcare centre can have lunch or play in the activity rooms, which remain open during the lunch hour. They are accompanied by educators, who make sure that each child has eaten lunch.

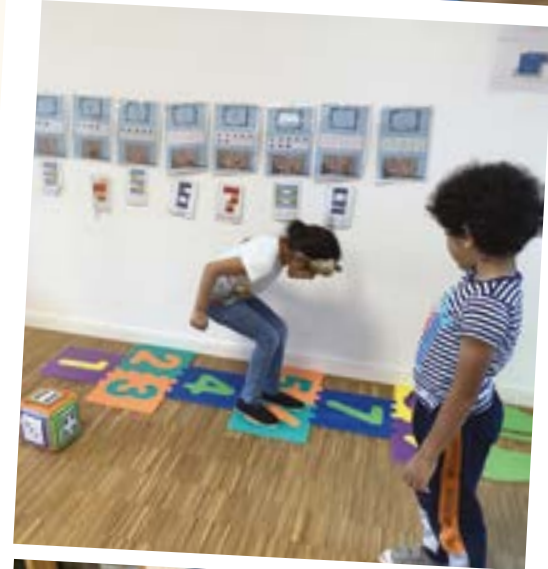
Children who return home go out with a teacher to wait for their parents in front of the school building.

Monday, Wednesday and Friday afternoons from 1.45 to 3.45 p.m.

The class teachers go to their respective rooms and the children take part in activities organized by the teacher.

Once again, children enrolled at the relay centre are taken care of by educators in the activity rooms. The other children remain with a teacher until their parents come to collect them.

Outings to the forest and a visit to the multimedia library are organized every week.



$$1+2=3$$





Cycle 2



Organization and Objectives

In cycle 2, emphasis is placed on reading and writing in the German language. German is also the common language of instruction for mathematics and for introductory science. In mathematics, the children learn to calculate using the numbers from 0 to 100, are introduced to geometry, discover measurements and solve arithmetical problems.

The main subjects are mathematics and German. There are also creative subjects (crafts, drawing and music), sport (gymnastics and swimming), as well as introductory science, Luxembourgish and life and society lessons.

There are regular short oral activities in French.

Address

Bâtiment scolaire "Um Weier"
6, rue J.B. Weicker
L-5255 Sandweiler

Timetable

Mon	Tues	Wed	Thurs	Fri	Sat
Supervision in the playground: 7:50 to 8:00 a.m.					free
School: 8h00 - 12h10					
14h - 16h	free	14h - 16h	free	14h - 16h	





Permanent teacher of class 2.1 a
T: 35 97 11 - 318

↻ Nathalie Dolinski - De Cillia



Permanent teacher of class 2.1 b
T: 35 97 11 - 315

↻ Martine Weniger



Permanent teacher of class 2.2 a
T: 35 97 11 - 319

↻ Tanya Friden



Permanent teacher of class 2.2 b
T: 35 97 11 - 314

↻ Nadine Gales
Cycle coordinator



↻ Martine Becker-Moecher
Support and deputy teaching duties



↻ Yvette Schosseler
*Support and deputy teaching duties
replacing Josiane Bellot
during her maternity/parental leave*

↻ Josiane Bellot





Cycle 3



Organization and Objectives

In cycle 3, the teaching is focused on learning French, both oral and written. In German, the skills acquired in cycle 2 are further developed. Writing and the comprehension of texts are two important components.

In mathematics, the children's mastery of numbers is extended to one million. The problems to solve become more complex.

There are three principal disciplines: German, mathematics and French. The other branches are introductory science, Luxembourgish, drawing, crafts, music, life and society, gymnastics and swimming.

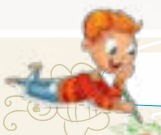
German remains the common language of instruction in mathematics and introductory science.

Address

Bâtiment scolaire "Um Weier"
6, rue J.B. Weicker
L-5255 Sandweiler

Timetable

Mon	Tues	Wed	Thurs	Fri	Sat
Supervision in the playground: 7:50 to 8:00 a.m.					
School: 8h00 - 12h10					free
14h - 16h	free	14h - 16h	free	14h - 16h	





Permanent teachers of class 3.1 a

T: 35 97 11 - 322
(former class Martine Weniger)

☞ Tanja Kariger

Linda Eischen ☞



Permanent teachers of class 3.1 b

T: 35 97 11 - 321
(former class Josiane Bello)

☞ Carole Rosenfeld



Permanent teachers of class 3.2 a

T: 35 97 11 - 320

☞ Joëlle Konsbrück-Greter
Cycle coordinator

Olivia Kirsch ☞



Permanent teacher of class 3.2 b

T: 35 97 11 - 323

☞ Susana Dinis Martins

Sandy Decker ☞

**Replaced by Caroline François during her maternity/parental leave*



☞ Sarah Hoffmann
Deputy teaching duties



☞ Caroline François
Deputy teaching duties





Cycle 4

Organization and Objectives

In cycle 4, all of the skills acquired in the three main branches are further developed in order to prepare the children for high school (lycée).

At the end of cycle 4, pupils are capable of analysing complex texts in French and German, and know how to write texts and express themselves orally.

In mathematics, they have mastered the use of numbers beyond one million. Pupils are capable of combining different skills (operations, geometry, quantities, and measurements) in order to solve more complex exercises. Introductory science is replaced by the following three branches: natural sciences, geography and history.

The common language of instruction for lessons in natural sciences, geography, history and mathematics is German.

The other subjects are science, Luxembourgish, crafts, drawing, music, life and society, gymnastics and swimming.

Address

Bâtiment scolaire "Um Weier"
6, rue J.B. Weicker
L-5255 Sandweiler

Timetable

Mon	Tues	Wed	Thurs	Fri	Sat
Supervision in the playground: 7:50 to 8:00 a.m.					
School: 8h00 - 12h10					free
14h - 16h	free	14h - 16h	free	14h - 16h	



Permanent teachers of class 4.1 a
 T: 35 97 11 - 325
(former class Tanja Kariger/Linda Eischen)

☛ Dan Hoffmann

Sarah Hoffmann ☛



Permanent teachers of class 4.1 b
 T: 35 97 11 - 324
(former class Carole Rosenfeld)

☛ Christophe Meerpohl

Sarah Hoffmann ☛



Permanent teacher of class 4.2 a
 T: 35 97 11 - 328

☛ Carole Ressleringer

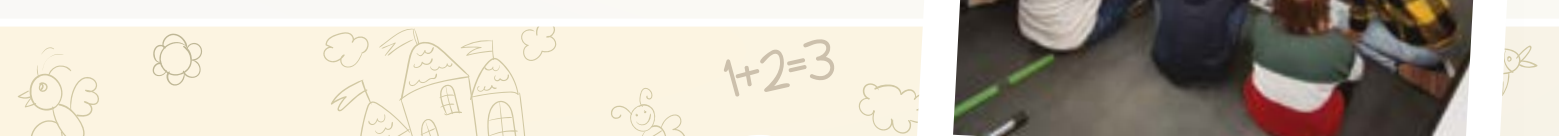
Christian Even ☛



Permanent teacher of class 4.2 b
 T: 35 97 11 - 329

☛ Sonja Barthel
Cycle coordinator

Christian Even ☛





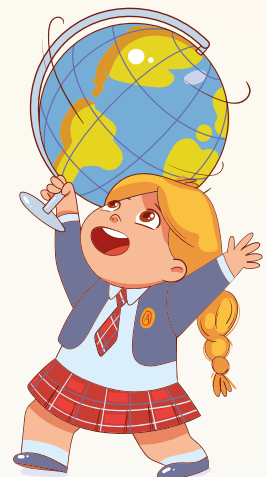
Léierstiffchen

“Léierstiffchen” is an educational project aimed at supporting pupils and teachers in order to enable all pupils in our school to participate as full members in lessons and make personal progress. Personal well-being and self-esteem are paramount.

Pupils who have more difficulty in achieving the study plan objectives are provided with support individually or in small groups. To this end, the Léierstiffchen team first assesses their learning level. They then work with appropriate materials, in short stages, using all their senses in order to achieve the established objectives. At the same time, measures are taken in the classroom in order to support and consolidate this learning process. The priorities, objectives and measures are set by the educational team for a defined period and are regularly assessed and adjusted.

Every 2 weeks, pupils who are good at mathematics take part in a “Léierstiffchen”-style mathematics lesson in small groups.

This lesson is aimed at recognizing problems, analysing them logically and finding solutions. In addition, these pupils learn to engage in difficult tasks without immediately giving up.



Léierstiffchen Team



Claudine Thiry

Claudine Thiry is a primary school teacher and has been a member of the "Léierstiffchen" team for 4 years. She is principally responsible for support lessons for pupils of the 2nd and 3rd cycles. She also organizes lessons in mathematical challenges, a field in which she is particularly interested. She has represented Luxembourg at numerous world championships in Sudoku and logical puzzles.



Danièle Konsbruck

Danièle Konsbruck has worked at Sandweiler primary school for 29 years; initially as a teacher of cycles 2 to 4, then as head of the integration class and—for the last 6 years—as a specialized teacher for children with specific needs (I-EBS*).

Within the "Léierstiffchen" team, Danièle Konsbruck is in charge of support lessons for pupils in all cycles. In the interests of pupils' personal well-being, she also takes care of a certain number of the school's social projects.

Having followed numerous professional in-service training courses, she is able to provide support for pupils and teachers. She also collaborates with the educationalists and psychologists of the ESEB (Children with special or specific educational needs' support team)** as well as with the competence centres.



Simone Barthel

Simone Barthel has worked as a professionally qualified educator (Educator graduée) for the Remich Directorate's ESEB (Children with special or specific educational needs' support team) in different schools in the region for 7 years. For the past 5 years, she has supported pupils with specific needs at Sandweiler in close collaboration with the teachers, the "Léierstiffchen" team and the Remich "ESEB" assessment team. She has been a member of the "Léierstiffchen" team since September 2021. In addition to support lessons, she also takes care of social projects at Sandweiler school.



* Teacher specializing in the education of children with special or specific educational needs

** Children with special or specific educational needs' support team (ESEB, Equipe de soutien des élèves à besoins éducatifs particuliers spécifiques)



General Information

School Commission

The school commission (commission scolaire) is composed of 4 representatives of the municipality, 2 parents' representatives and 2 representatives of the teaching staff.

The school commission's tasks are as follows:

- ❶ coordinating proposals concerning the organization of schools and the school development plan (plan de développement scolaire) and issuing opinions for the local council
- ❷ monitoring the implementation of school organization and school development plans
- ❸ promoting extracurricular management measures
- ❹ issuing opinions on school budget proposals
- ❺ taking part in the development (construction, alteration etc.) of school buildings

Parents Representatives

The parent representatives are elected by the Parents' Assembly for a period of 3 years.

The parent representatives' tasks

- ❶ discussing, completing and developing school organization proposals and school development plans drawn up by the school committee (comité d'école)
- ❷ organizing joint meetings and events with the school's partners
- ❸ making proposals on all questions related to the organization of school life

Collaboration with the Parents' Association

Since its creation in 1998, the Parents' Association has shown great commitment to the interests of children attending Sandweiler elementary school.

Activities 2021/2022

- ❶ distribution of croissants on the first day of the school year
- ❷ "Kuck a Klick" in cycle 2.1
- ❸ assistance during the school walking cup
- ❹ end-of-year celebration for cycle 4.2
- ❺ school's out celebration
- ❻ funding of a part of the new furniture for the "Liesstiffchen"
- ❼ donation of school and teaching materials for Ukrainian pupils welcomed at the Sandweiler school

Members of the committee

Chair: Julie Durand
Secretary: Sonia Martins
Treasurer: Dan Ciccarelli

Members: Jeff Risch, Elisabete Rodrigues, Laetitia Pettinato-Miltgen, Sylvia Verbiest, Sylvie Denayer, Isabelle Rossignol, Mechthild Anders, Andriana Rosamoelimanana, Victoriya Civilyte, Jessica Bauly-Sicre

Education Department

(Service de l'enseignement)
(Service de l'enseignement)

The role of the municipality's education department is the management of different administrative tasks concerning Sandweiler Elementary School.

Sonja Lang T: 35 97 11 - 205
E: sonja.lang@sandweiler.lu



This year there will be a new election of parents representatives in the first term.

To contact the Parents' Association, please write to them at the following address: sev.sandweiler@gmail.com



Sandy Decker, Carole Rosenfeld,
Susana Dinis, Christian Even

Susana Dinis Martins (Chair)
T: 621 502 421
E: susana.dinis@education.lu



School Committee

The School Committee (Comité d'école) is elected for a 5-year period by the members of the school's teaching staff and is composed of teachers from the school.

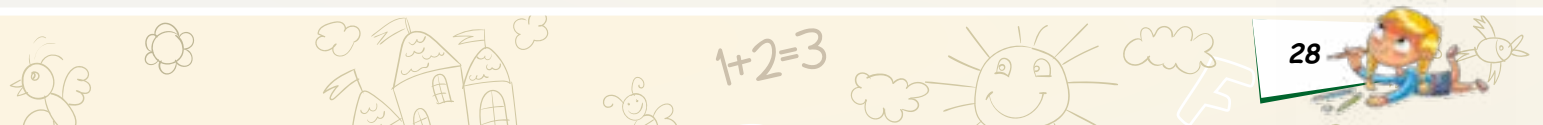
Members of the Sandweiler School Committee from 2019 to 2024: Sandy Decker, Christian Even, Carole Rosenfeld, Susana Dinis Martins

The School Committee's tasks:

- developing school organization proposals
- drafting school development plans (Plan de développement scolaire, PDS) and participating in the assessment thereof
- drawing up proposals on the allocation of the budget
- giving its opinion on any question relating to the school
- determining staff in-service training needs
- organizing the management of teaching and IT equipment
- approving the use of teaching materials

Tasks of the Chair of the School Committee:

- chairing, preparing and coordinating the School Committee's work
- ensuring proper running of the school, together with the director
- organizing and coordinating the educational teams' work
- organizing relations with:
 - the municipal and national authorities
 - pupils' parents
 - the childcare centre and the school health and social welfare team
- welcoming supply teaching staff and organizing the schooling of new pupils
- coordinating teachers' timetables
- collecting data concerning pupils
- informing the mayor of any absence of pupils without valid reason
- granting exemptions from school attendance of more than one day





Joëlle Konsbrück-Greter, Sonja Barthel,
Valérie Millim, Nadine Gales

Cycle Coordinators

Tasks of the cycle coordinators:

- convening meetings of the educational team
- setting the agenda, leading meetings and documenting decisions taken
- organizing coordination and communication within the cycle
- representing the cycle team in relation to:
 - the School Committee
 - parents
 - the childcare centre staff

School Health Service

In the course of your child's education, their health is monitored by the school health service team from the Health and Social Welfare League (Ligue médico-sociale). The examinations are compulsory and free of charge. They are conducted for pupils in cycles 1.1, 1.2, 2.2, 3.2, and 4.2:

- measurement of weight and height
- routine analysis of urine
- routine examination of visual acuity
- monitoring of vaccination card
- hearing test
- health check-up by the school doctor
- social welfare assessment

The school doctor does not provide any medical treatment. In case of observations requiring further medical advice, an explanatory letter is sent to the parents with a recommendation to consult their family doctor.

The findings are recorded in a medical record and managed in complete confidentiality. This record will be handed over to you on request at the end of your child's schooling. The school health and social welfare team is at your disposal for any questions concerning your child's health and their integration into school and society.

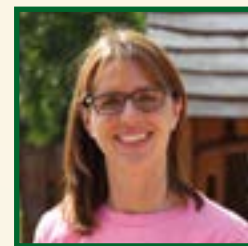
The cycle coordinators 2022/2023:

Cycle 1: Valérie Millim
Cycle 2: Nadine Gales
Cycle 3: Joëlle Konsbrück-Greter
Cycle 4: Sonja Barthel

Dr Raoul Warken
(School doctor)

2, rue de Mouffort
L-5310 Contern

T: 26 78 57 55
E: cabinetwarken78@gmail.com



Diane Urwald
(Qualified paediatric nurse (Infirmière graduée) Service Médico-social (Health and Social Welfare service))

20, route du vin
L-6794 Grevenmacher

T: 75 82 81 - 1
E: diane.urwald@ligue.lu

The Regional Directorates

In Luxembourg, there are fifteen regional directorates. Sandweiler school belongs to the Remich directorate. The latter is managed by a director and two deputy directors.

The directorates are responsible for:

- ① administrative management and pedagogical supervision of the schools
- ② consultation with and support of professionals
- ③ professional integration of young teachers and educators
- ④ management of relations between teaching staff within schools and relations with parents.

The directors work in close collaboration with the Chairs of School Committees. They are also in charge of catering for children with specific needs.

Monsieur Marco Suman, directeur
de l'enseignement fondamental

Madame Jessica Casanova, directrice
adjointe de l'enseignement fondamental

Madame Josiane Schons, directrice
adjointe de l'enseignement fondamental

Address du secrétariat:
Direction de région -Remich
3, Konzerwee
L-5444 Schengen

secretariat.remich@men.lu
T: 24 75 59 10
F: 24 75 59 11

Reception of newly-arrived children

Reception of newly-arrived children

Children from 3 to 11 years of age

Children are enrolled in elementary school via the education department of the municipality of residence.

Children of 12 years of age and over

Recently arrived youngsters **aged 12 or more** are enrolled at school and guided in their choices by a specific reception unit (Cellule d'accueil scolaire pour élèves nouveaux arrivants - CASNA). In order to ascertain the suitable class and level of competences of each child, the CASNA assesses his/her school achievements and knowledge of languages.

Enrolment in municipal primary education

Public elementary schools cater for children from 3 to 11 years of age. All children living in Luxembourg having reached 4 years of age before 1 September must attend elementary school. Children having reached three years of age before 1 September may attend an early childhood education class, if their parents so wish.

Parents will receive an application form from the municipal administration for eventual enrolment in early childhood and preschool education.

The municipality automatically enrolls the child in the school corresponding to their place of residence (cycle 2 - 4).

Parents arriving in the municipality in the course of the year should contact the municipal administration's school service directly.

Administration communale de Sandweiler
Service scolaire
Gemeindeverwaltung Sandweiler
Schuldienst
18, rue Principale
L-5240 Sandweiler
T: 35 97 11 - 205
E: sonja.lang@sandweiler.lu

Cellule d'accueil scolaire pour élèves
nouveaux arrivants
29, rue Aldringen
L-1118 Luxembourg
T: 24 77 65 70
E: secretariat.secam@men.lu



Primary Education

Mode of operation

Primary education is organized in four learning cycles. Cycle 1 corresponds to preschool education and generally covers three years. The first year (early childhood education) is optional.

Cycles 2 to 4 correspond to primary education. In each cycle, your child is enrolled in a class. Each class is accompanied by one or two permanent teachers throughout the cycle (2 years).

Competence-based teaching

In elementary school, teaching is based upon competences. A competence is a child's ability to use their knowledge to accomplish a task or solve a problem.

Children need to be able to mobilize their knowledge in concrete and new situations, both in school and in life. However, it is important to understand that there can be no know-how without knowledge, hence the importance of homework and repetition.

Throughout the year, teachers try to develop the pupils' required competences. Let us note that integration weeks, conferences, workshops in the multimedia library, internet research, educational visits and outings, constitute special moments when different areas of competence combine to create a particularly favourable learning environment.

Assessment at Elementary School

Teachers assess pupils on a regular basis. Various different methods are used: tests, assessment of work, observations, in-class assignments, etc.

Three times a year, at the end of each term, parents are informed of their child's progress at a personal interview with the teacher.

This information is provided with the assistance of two different tools:

- intermediate assessment
- end of cycle assessment



The "Um Weier" School Playground

The playground of the municipal school is closed to the public at lesson times. Outside of school hours, the playground is open to the public at the following times:

- spring and summer: from 7.00 a.m. to 9.00 p.m.
- autumn and winter: from 7.00 a.m. to 8.00 p.m.
- Sundays and public holidays: from 9.00 a.m. to 8.00 p.m.

The use of bicycles, skateboards, etc. is prohibited during lesson times, i.e. Monday, Wednesday and Friday from 7.50 a.m. to 4.10 p.m. and Tuesday and Thursday from 7.50 a.m. to 2 p.m.



Special features at the Sandweiler School



Social Projects at Sandweiler

SaKaRo: Sandweiler Children's

Council

The SaKaRo (Sandweiler Kannerrot) is the council of children of cycles 2 to 4. Representatives from the different classes take part in SaKaRo meetings. They try to find solutions to problems of school life and organize events.

Participation in SaKaRo meetings promotes the development of a sense of responsibility and a democratic spirit and contributes to enhancing the school environment by involving pupils in the decisions of school life.

Once a year, a SaKaRo meeting is held at the town hall in the presence of the mayor, Ms Simone Massard-Stitz.



Social Lessons in Cycles 2 - 4

The aim of social lessons is to prevent conflict and provide children with the means of dealing with it in a positive manner.

During social lessons, children learn that conflict as such is neutral. Children also reflect on how they react at times of conflict. They become aware of their own feelings and those of their fellow students. Another important aspect is learning to formulate problems by means of objective assertions, and to refrain from making judgements and premature interpretations.



“Stiffchen”: a space for children to speak

In order to listen to children with personal problems, Danièle Roos- Konsbruck has set up a space for speaking called “Stiffchen”.

In individual interviews, problems are defined and each individual’s feelings, needs and expectations are identified. Discussions then focus on possible solutions.

Following this initial discussion, and with the children’s agreement, there are often further discussions with other children involved, with the teachers concerned and sometimes with parents.

Generally speaking, the simple fact of talking to somebody who listens attentively to them in a non-judgemental manner, is helpful for children in itself.

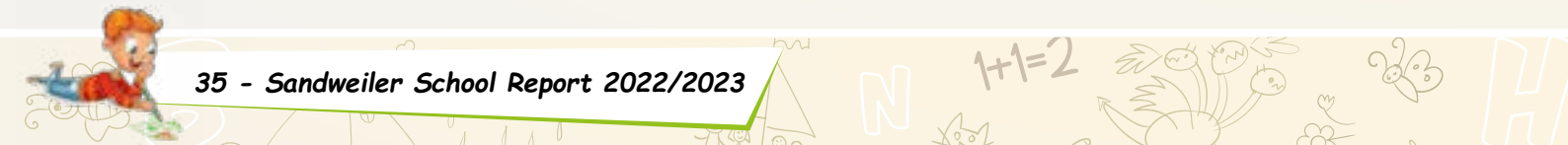




Social Projects at Sandweiler

"Pausenengel" Project

A "Pausenengel" is a pupil, trained by the school, whose task is to help fellow pupils in resolving small everyday problems and to assist them in dealing with conflicts at playtime. Cycle 4.1 pupils who wish to take part in the project do so as volunteers. They receive 9 hours of training with the teachers.



Godfather/Godmother Project

The godfather/godmother project has been running in our school for a number of years. The project is part of the school development plan.

Children in cycle 4.1 choose a godson or goddaughter in cycle 1.2, who is due to begin cycle 2.1 in September. Their godfathers or godmothers accompany them through this big step in their lives.

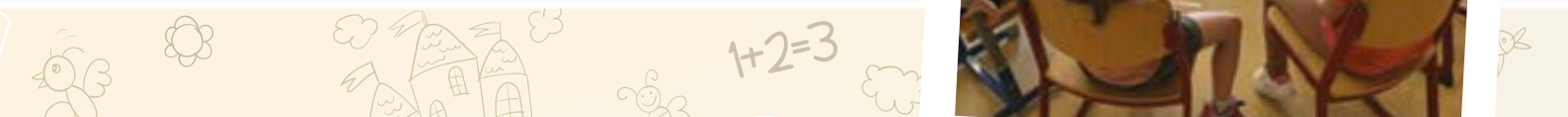
This year, the children met to play together and get to know each other. A meeting took place at the school's multimedia library, where the children from cycle 4.1 read to their younger friends.



Learning to express one's feelings in cycle 1

The aim is to help children in developing a more respectful attitude both towards themselves and others. Once a week, the children are accompanied in small groups by Li Wenner.

Through stories and role-playing, in which they re-enact situations from their lives, the children become aware of their own feelings and those of others.



A New Class for Annabelle, the Teaching Assistant Dog*

An initial meeting with Annabelle took place at the time of a walk in the forest, which was the beginning of our educational project. The pupils began by studying dogs' ancestors, wolves, while also taking a look at other members of the big dog family. Other topics included different breeds of dogs and their role in facilitating human labour and Annabelle's dog accessories.

It was necessary to establish rules in order to make Annabelle feel comfortable in our class and everybody took part in the tasks of preparing for her visit. Now all of the children know that dogs are extremely sensitive to noise.

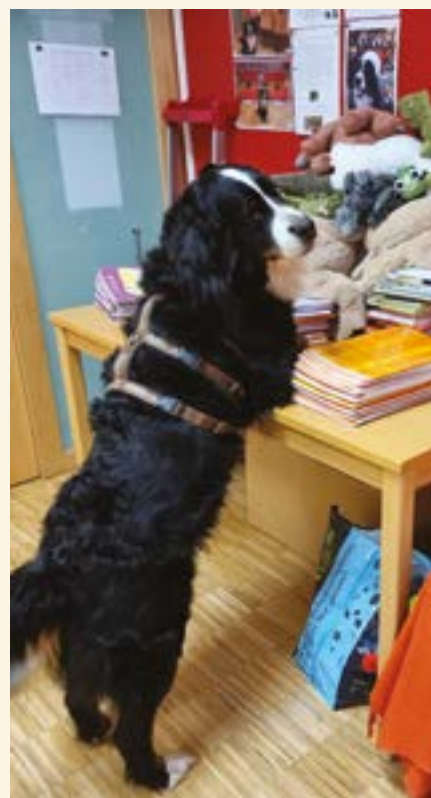
The children learned about dogs as social animals, that use a specific language to express themselves. This knowledge is essential in order to be able to communicate and work with Annabelle. From seeking and fetching homework, to rolling a large die and drawing cards, Annabelle had many tricks up her sleeve for motivating the pupils in the various school subjects.

Reading the books "Hier kommt Henriette" and "Tobi a disparu" enabled us to make children's literature a part of our project.

On 22 June, Annabelle successfully passed the teaching assistant dog test, which has to be renewed every two years.

Annabelle and I are eagerly awaiting the next part of our project in the autumn.

Joëlle Konsbrück



* Annabelle is a qualified teaching assistant dog (chienne d'assistance pédagogique diplômée).





Sandweiler School has a set of 16 iPads for classes. Each teacher also has an iPad in their classroom, which can be used in a targeted manner. Children are able to use this tool for completing exercises and for language learning through fun games. Our iPads have a large number of applications specially designed for use in the classroom.

Many pupils are also learning programming with the help of iPads.

A special programme enables them to define commands and thus move a robot around a grid.



Specialized digital skills primary school teacher (instituteur spécialisé en compétences numériques, I-CN)

The Remich directorate has had a specialized digital skills primary school teacher (I-CN) among its teachers since 2020.

This teacher, Jean-Claude Marson, is responsible for all of the schools in Directorate 9. His role is to assist and support school staff with regard to the implementation of information and communication technologies.

Jean-Claude Marson also provides professional in-service training for teachers. He organizes lessons for children on digital media, cyber-bullying, how computers work, programming and many other topics. He also raises pupils' awareness about sensible use of new media.



The School Development Plan (SDP)

The SDP (Plan de développement scolaire, PDS) is aimed at meeting the school's specificities and needs.

The teachers at Sandweiler School have decided to focus on reading in their SDP. The plan will be current until July 2024.

Objective no. 1:

We encourage a taste for reading in our pupils from an early age and pass on the pleasure of reading.

Possible activities:

- reading to other classes
- presentation of books and reading aloud by the teacher
- establishing a "multimedia library permit" in order to learn the multimedia library rules
- reading by an author

Objective no. 2:

We create a climate of trust and well-being for children to ensure that they become full citizens of the school who are able to give their opinions, take part in decisions, become responsible and feel that they are listened to.

Activities:

- Sakaro
- class meeting
- Pausenengel
- "Stiffchen" discussion space
- social lessons
- godfather/godmother project

Objective no. 3:

At the "Léierstiffchen" children with specific and special needs take part in activities adapted to their needs. The activities are decided upon by the educational team, in consultation with the I-EBS (specialized teacher for children with specific needs) and the head of the "Léierstiffchen" for a limited period.

Objective no. 4

The cycle 1 educational team works according to the concept put in place at the time of a specific training session, which includes the participation of the cycle 1 teachers and the childcare centre staff.





Extracurricular Supervision

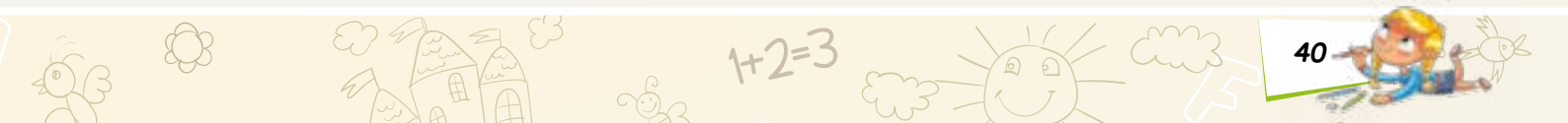
Extracurricular supervision plan - ESP

The ESP (Plan d'encadrement périscolaire, PSP) is aimed at reinforcing dialogue and collaboration between the school and the childcare centre, in order to achieve coherent instruction and supervision for children throughout the day.

The ESP thus makes an inventory of the whole of the activities provided to children in the municipality, in particular:

- access to documentary sources
- cultural and sports activities
- leisure and recreational activities
- supervised study and help with homework
- lunchtime meals
- before and after school reception

The ESP of the municipality of Sandweiler is published on the website:
www.sandweiler-schoulen.lu





ABC **School Multimedia Library** N



- ❖ around 20,000 titles in 12 different languages
- ❖ Persons in charge of cycles 2 to 4: Linda Eischen, Joëlle Konsbrück, Carole Rosenfeld
- ❖ Persons in charge of cycle 1: Fabienne Apel, Ken Garnie, Jennifer Beissel
- ❖ Once a week, children can go to the multimedia library with their class.
- ❖ Children are able to borrow two books and a DVD or CD for a maximum of two weeks.

The multimedia library is a quiet place where certain children like to come to read quietly or listen to stories.

The people in charge listen to the children, advise them on which books to borrow and buy the latest books published on the market so that each child can find reading material to suit their tastes.



Focus on Reading

Young readers are fascinated by new books, which is why acquiring them is a priority for the multimedia library team. In most cases these are new publications, but teachers and pupils can also express their wishes for orders.

The number of books in the multimedia library is therefore constantly increasing. For this reason, in the autumn of 2021, we decided to remove older copies and order new shelves covering an entire wall, as well as two storage columns for CDs and DVDs.

The new shelves principally contain comics and manga, a literary genre that is very popular with our pupils.

Most of the books that are no longer part of our selection have been given to pupils, other books have been added to the mini-library in the book cabin behind the municipality. Thanks to an ingenious initiative, a sustainable reading project has emerged: residents can take books home, as well as placing their books at other readers' disposal.

An exhibition of school books of yesteryear, exhibitions of books on particular topics of interest and seasonal decorations contribute to completing the school library setting. The multimedia library team has also organized two readings by authors.

Isabelle Marinov and Viviane Daman presented their books to young audiences. Thanks to the support of the Sandweiler pupils' parents association and the municipal administration, a new project has been launched: the fitting out of a reading room. Warm thanks on behalf of our entire school community!





Maison relais Sandweiler (cycle 1)
 3, rue Nicolas Welter
 L-5256 Sandweiler
 T: 35 97 11 402 / 403
 E: educateurshvdk@sandweiler.lu
 maisonrelais.sandweiler.lu

Maison relais Sandweiler (cycle 2 à 4)
 6, rue J.B. Weicker
 L-5255 Sandweiler
 T: 35 97 11 640 / 641
 F: 35 97 11 660
 E: maison.relais@sandweiler.lu
 maisonrelais.sandweiler.lu



Maison relais (Childcare centre)

Sandweiler Childcare Centre (Maison Relais) provides full-time supervision, outside school hours, throughout the year, for children from 3 to 12 years of age, attending Sandweiler elementary school.

Services provided:

School meals:

The centre serves fresh, well-balanced meals. In both school buildings, they are prepared on site by two cooks and an assistant cook in a professional kitchen. The meals are presented in the form of a self-service buffet. Two main courses (vegetarian and non-vegetarian), vegetables, salads and desserts are at the children's disposal. They are able to choose what they want to eat. We accept that children do not like certain foods, or that they may not be very hungry, enabling them to follow their own rhythm.

Extracurricular supervision during school periods (until 6.30 p.m.):

The childcare centre has operated according to the "world workshops" principle since 2016. For this reason, the premises of the childcare centre have been reorganized into workshops and dining rooms. Most of the workshops are open every day, and some on alternate days.

The workshops provided cover the fields of activity of the national reference framework for non-formal education, which are:

- Emotions and social relations
- Values, participation and democracy
- Language, communication and media
- Creativity, art and aesthetics
- Movement, bodily awareness and health
- Science and technology

Children are able to choose which workshop they want to take part in and when they want to have lunch.



Rachel Manderscheid
 director, professionally-qualified educator (Educator graduée)
 T: 35 97 11 403
 T: 35 97 11 408
 rachel.manderscheid@sandweiler.lu



Lidija Djurdjevic
 (early childhood & preschool education)
 deputy director, professionally-qualified educator (Educator graduée)
 T: 35 97 11 402
 lidija.djurdjevic@sandweiler.lu



Stefanie (Steffi) Fritz
 (Cycle 2-4)
 deputy director, educator
 T: 35 97 11 641
 stefanie.fritz@sandweiler.lu



Supervision of children during the school holidays

During the school holidays, the childcare centre is open from 7.30 a.m. to 6.30 p.m. Activities are provided in the different workshops. At the beginning of each school year, parents are informed of the days on which the childcare centre is closed.

Homework supervision

The childcare centre provides pupils with the opportunity to do their homework. Supervision is organized. However, the educational staff do not correct homework.

Enrolment

Enrolments for the "Haus vun de Kanner" (Early Childhood and Preschool education) school building are open every year between 1 and 31 March. Enrolments for the childcare centre for cycles 2 to 4 are open between 15 May and 15 June. During this period, please make an appointment with the director or deputy director. (Documents required: copy of vaccination card, parents' employment certificates).

The enrolment forms are completed with the parents at the appointment. They are not sent to parents in advance, neither are they placed on the website.

Parents receive a definitive answer by post, at the latest by 1 August. Any children enrolled after 31 March or 15 June respectively are automatically placed on a waiting list.

Early Childhood and Preschool



Anna Boesen

Educator



André Dias Lérias

Educator



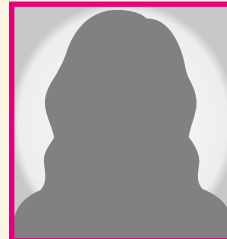
Filipa Lopes Neves

Educator



Sarah Soares

Educator



Sarah Al-Sheikh

Educator



Mirella Laera

Assistant educator



Zeneide Rodrigues

Assistant educator



Corinne Burnet

Assistant educator

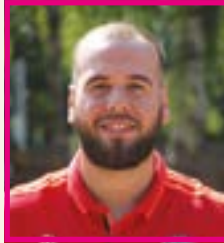
For further information on the free provision of childcare centre services, please visit www.staarkanner.lu.

T: 35 97 11 415
T: 621 311 383
hausvundekanner@sandweiler.lu
educateurshvdk@sandweiler.lu

Cycle 2 - 4



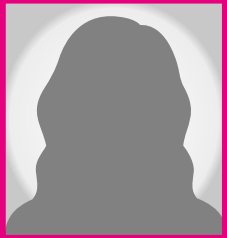
Valdemir (Valdy) Coelho Gomes
Educator
T: 35 97 11 650



Jo De Oliveira
Educator
T: 35 97 11 657



Lisa Urbany
Educator
T: 35 97 11 651



Jessica Tavares
Assistant educator
T: 35 97 11 642



Dany Faria Loureiro
Trainee educator
T: 35 97 11 642



Annette Schockmel
social and family assistant
T: 35 97 11 654



Jeff Siebenaler
Assistant educator
T: 35 97 11 642



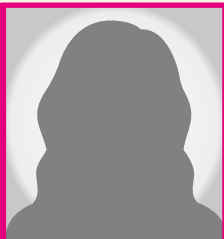
Sheila Weber
Assistant educator
T: 35 97 11 642



Joëlle Thurmes
Assistant educator
T: 35 97 11 642



Celine Vermeulen
Assistant educator
T: 35 97 11 642



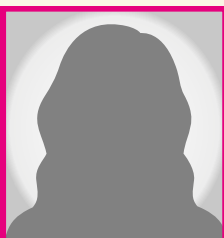
Carmen Vituzzi
Assistant educator
T: 35 97 11 642



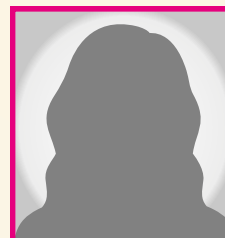
Ivana Gligorijev
Assistant educator
T: 35 97 11 642



Sandra Britten
Assistant educator
T: 35 97 11 642



Jana Ewen
Assistant educator
T: 35 97 11 642



Iryna Shtykhno
Assistant educator
T: 35 97 11 642



Olivier Ferber
Assistant educator
T: 35 97 11 642

Cuisine



Michaela Eck
chef Early childhood and Preschool education
T: 35 97 11 405



Eric Zielonkowski
chef Cycle 2 - 4
T: 35 97 11 645



Corinne Burnet
assistant chef Early childhood and Preschool education
T: 35 97 11 405

Piwitsch Day Nursery



Opening times

Monday to Friday from 7.00 a.m. to 6.30 p.m., except on public holidays.

Admission

Children from 3 months to 4 years of age are admitted to the "Piwitsch" day nursery.

Registration possibilities

- Full-time enrolment (minimum 8 hours)
- Part-time enrolment (minimum 6 hours)
- Morning enrolment with collection before 12:00 p.m.
- Morning enrolment with collection at 12.30 p.m.
- Afternoon enrolment with collection between 2:00 and 3:00 p.m.

Priority is given to

- ❶ single-parent families
- ❷ families with both parents professionally occupied
- ❸ children from a sibling group
- ❹ when the child is the beneficiary of an inclusion measure
- ❺ 70% for residents of the municipality of Sandweiler
- ❻ parents employed within the municipality of Sandweiler
- ❼ disadvantaged families

Important information:

Families in which one parent is on full-time parental leave are not entitled to full-time places.

Extracurricular supervision by Piwitsch non-profit organization (a.s.b.l.)

Piwitsch a.s.b.l. runs the day nursery and the childcare centre in Sandweiler with more than 44 employees. Children are looked after in the day nursery from 3 months of age, with the childcare centre subsequently taking over.



Piwitsch Day Nursery

2, rue de Contern T: 35 69 49 - 41
L-5215 Sandweiler F: 35 69 49 - 36

Visit our website:

creche.sandweiler.lu
E: creche@sandweiler.lu



Manon Lamy
Director

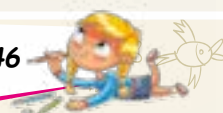


Line Fantin-Halsdorf
Deputy Director

The board of Piwitsch a.s.b.l. is composed of:

Chair: Pascale Dumong-Berg
Vice-chair: Simone Massard-Stitz
Secretary: Patrick Nothum
Treasurer: Roger Meysembourg

Members: Martine Obertin, Carole Kraus, Carole Stammel-Leyder





LASEP - League of Primary Education Sports Associations

The aim of the LASEP (Ligue des Associations Sportives de l'Enseignement Primaire) is to promote favourable attitudes towards physical exercise among elementary school pupils. The LASEP thus provides weekly sports lessons to children in their municipality outside of school hours.

Sports events organized at the national level, in which the Sandweiler LASEP groups participated in 2021/2022:

- 🕒 Butzendag
- 🕒 Volley games promotion
- 🕒 Long-distance race around Echternach lake
- 🕒 Cycling day in Cessange
- 🕒 Move with Sporty our mascot

LASEP timetable ("Um Weier" site)

Cycle 1: Tuesday from 1.30 to 2.30 p.m. Cycle 2: Thursday from 2 to 3 p.m.

Cycle 3: Friday from 4 to 5 p.m.

Cycle 4: Wednesday from 4 to 5 p.m.

Starts: week of 19 September 2022

Swimming sessions will be offered to all our LASEP participants ("Lasepistes"), depending on the availability of the swimming pool once a term.

To register your child, please download the form below by QR code and hand it in with the 25€ subscription fee to the LASEP manager at the beginning of the school year in September.

Contact / Kontakt:

Pour de plus amples renseignements, veuillez contacter Mme Carole Ressleringer:
 carole.resslinger@education.lu

Für weitere Informationen können Sie sich an Frau Carole Ressleringer wenden:
 carole.resslinger@education.lu

Compte Lasep Sandweiler:
 LU68 1111 0403 5503 0000



Scan me!

Associations page



Union Sportive Sandweiler FC

B.P.74
L-5201 Sandweiler

ussandweiler@hotmail.com
www.ussandweiler.com



Fanfare Sandweiler

49a, rue d'ltzig
L-5231 Sandweiler

E: roederjp@pt.lu
www.fanfaresandweiler.com

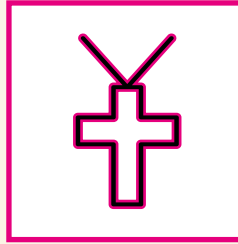
Jean-Paul Roeder
T: 621 50 66 35



Tennis Club Sandweiler

rue de la Gare
L-5218 Sandweiler

info@tcsandweiler.lu
www.tcsandweiler.lu



Sandweiler Massendénger

By St Esprit lewescht-Syr

17, rue Dicks
L-5216 Sandweiler

Monique Fischer
T: 35 72 46
monique.fischer@education.lu



Top Squash

25, rue de la Gare
L-5218 Sandweiler

nathan.sneyd@topsquash.lu
www.topsquash.lu

Nathan Sneyd
T: 35 71 81



Music Lessons

The UGDA music school provides music lessons for children. Enrolments for the 2023/2024 year will take place in June 2023. A booklet for enrolments will be distributed in May 2023. The person in charge is Ms Joëlle Wagener 35 97 11 - 204.



Tennis de Table DT 71 Sandweiler

48, Burgaass
L-5425 Gostingen

E: dtsandweiler@gmail.com

Joe Risch (secrétaire)
T: 621 32 97 25



Badminton

34, am Steffesgaart
L-5222 Sandweiler

E: info@bcsandweiler.lu
www.bcsandweiler.lu

Nadia Hermann-Olivi (présidente)
T: 621 26 41 18



Jugendpompjeeën

113, rue d'ltzig
L-5231 Sandweiler

E: cissan-cadre@cgdis.lu



Lëtzebuerger Guiden a Scouten

Hellege Mäerten Sandweiler

Chalet rue de la Gare

E: fehmar@pt.lu

Marcel Fehlen
T: 621 19 71 22





Activities 2021/2022

The school year was marked by restrictions. Masks were compulsory for much of the year. There was also weekly testing at school in order to detect positive cases within classes more rapidly. Sandweiler pupils braved all of these trials without complaint. Their teachers are very proud of them. Although Covid was and is a part of everyday life, a return to normality was observed in the course of the year.

However, one thing was not missing: school outings. These are important for the pupils, from both an educational and social point of view. The children greatly enjoy these outings and are always happy to experience new adventures with their classmates.

Activities in Cycle 1

The children in cycle 1 took part in the following activities:

- 📍 visit to an educational farm
- 📍 visit to the butterfly garden in Grevenmacher
- 📍 theatre play "Little Red Riding Hood"
- 📍 trip to the park in Bettembourg
- 📍 trips to the forest
- 📍 programming activities (Coding)
- 📍 trip to the "Bëschschoul"



Activities in Cycle 2

The pupils in cycle 2 had fun on the following school outings:

- 👉 visit to an educational farm
- 👉 visit to a museum
- 👉 "Kuck a Klick" activity
- 👉 discovery of the Emile Weber site (Wibbelschoul)
- 👉 trip to the cinema
- 👉 programming activities (Coding)



Activities in Cycle 3

The pupils in cycle 3 had some wonderful adventures on the following school outings:

- 👉 visit to the "Sciencecenter" in Differdange
- 👉 visit to museum
- 👉 trip to the cinema
- 👉 programming activities (Coding)
- 👉 activities with the circus school
- 👉 music project
- 👉 Philharmonic society



Activities in Cycle 4

The pupils in cycle 4 had a wonderful time with the following activities:

- 👉 helping Ukrainian children by collecting goods
- 👉 visit to the "Sciencecenter" in Differdange
- 👉 science festival
- 👉 trips to the forest
- 👉 barbecue in Moutfort
- 👉 taking part in a football match at the new stadium
- 👉 discovery of the capital with the Ukrainian pupils



$$1+2=3$$



A film for the Ministry of Education

In December, a film crew from the Ministry of Education came to Sandweiler at the time of the end-of-year festivities. The ministry wanted to make a film. The Sandweiler pupils had the opportunity to be involved in this project, and they showed great courage in speaking before the camera. They did not hesitate to wish all of the country's pupils a happy new year, and they also expressed their personal wishes for the new year. Congratulations children for this wonderful film!

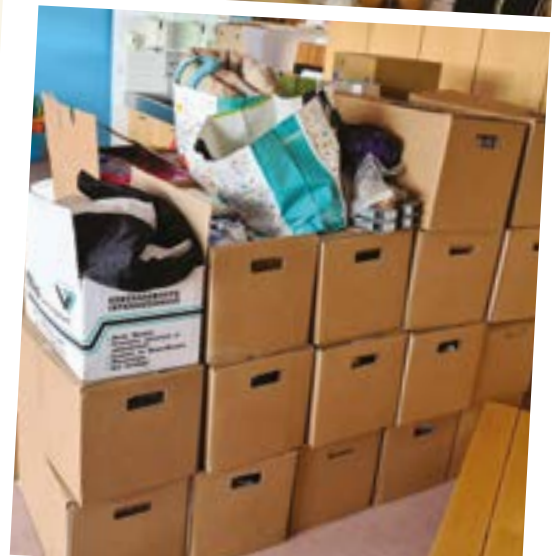
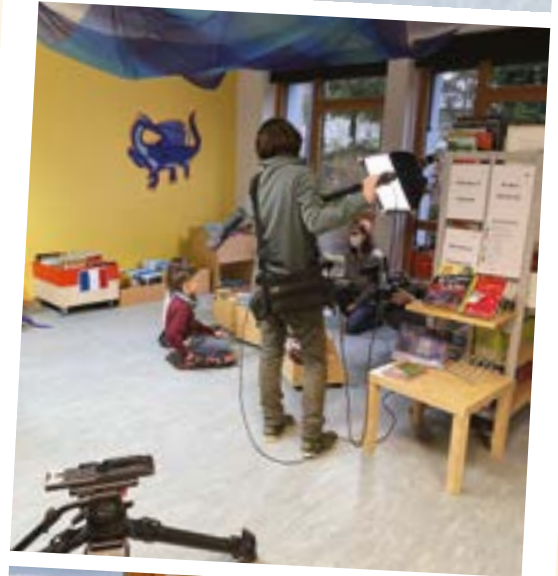
Ukrainian refugees at school Sandweiler

This year, we were all shocked by the start of the war in Ukraine and touched by the fate of the many people seeking refuge in Luxembourg. The municipality of Sandweiler has made classrooms available that can be used by secondary schools to cater for Ukrainian youngsters. In addition, the municipality and the parents' association did not hesitate to make funds available, enabling each Ukrainian child to receive a welcome gift. Colouring books, card games, cans, notepads, pencils etc., the children were delighted with the gifts and the warm welcome from the whole school.

Cycle 2 class writes a book

It all began with a craft activity. Each pupil in Martine Weniger's cycle 2.2 class made a small puppet. Together, the pupils brought their puppets to life by inventing stories for them. They made a book which they also illustrated. Lastly, our talented pupils presented their story to their cycle 1 classmates.

The book will be displayed in the school multimedia library. Congratulations to our budding artists!



Activities with the Police

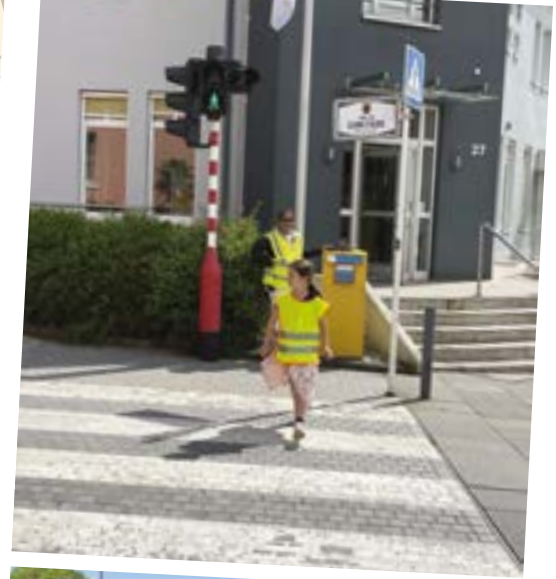
Road safety at school

Children's safety on their way to school is very important. Most children who live in Sandweiler walk to school, or come on their bicycles or scooters.

For this reason, the children of cycle 2.1 took part in the "Kuck & Klick" activity organized by the training centre for young drivers. The children discovered how they need to behave as pedestrians and learned about the risks of the road. This activity was provided to the children by the parents' association (SEV). The police visited the cycle 2 pupils to talk about the dangers of the road.

In April, all pupils took part in the "school walking cup". They thus showed that they have the skills required to walk to school and back home in safety.

In July the classes of cycles 3.2 had the opportunity of going to the traffic garden. On a circuit, police officers taught the children the rules that young cyclists have to follow on the road.



Sports Day

On 19 May, the children took part in sports day; the day is aimed at promoting children's interest in sports activities.



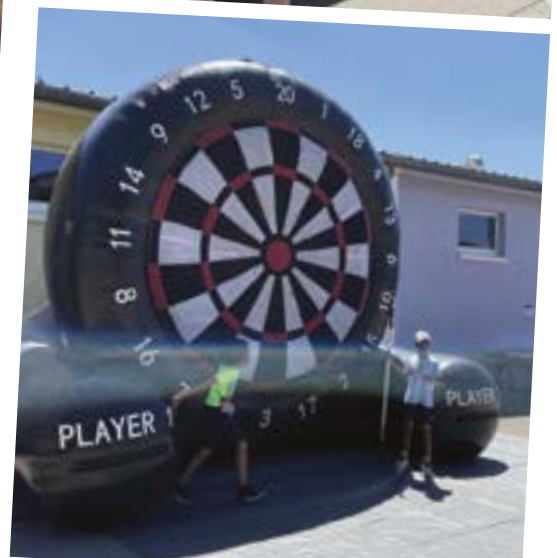
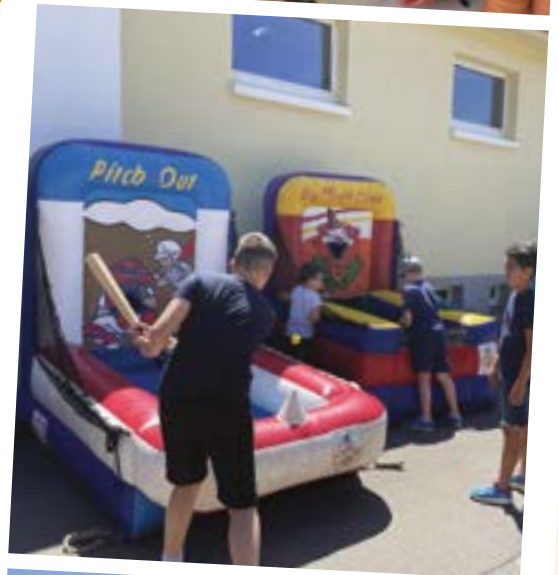


This year, the parents' association (SEV) was once again able to organize the traditional school fete.

After two years of restrictions, they pulled out all the stops, offering exceptional activities to the pupils of our school.

Warm thanks to the parents who organized this fête and also to those who were present to supervise the games.

The children will not forget this day for a long time to come.



Excursions and Camps



The cycle 1 classes spent a day at the wonderful park in Bettembourg.



The cycle 2.1 classes went to the "Sennesräch" park.



The cycle 2.2 classes went to "Robbesscheier" for three days.



The cycle 3.1 classes went to Belgium to explore the Caves of Han-sur-Lesse.



The cycle 3.2 classes went to Marienthal for 3 days.

The cycle 4.1 classes took part in a LASEP exchange. In May, they went to Thuringia in Germany and spent 5 days there with German classes. Their new friends then came to Luxembourg to discover our country. The children slept in a hostel in Remerschen. They took part in activities all over Luxembourg.



The cycle 4.2 classes went to Malmedy in Belgium for 4 days.



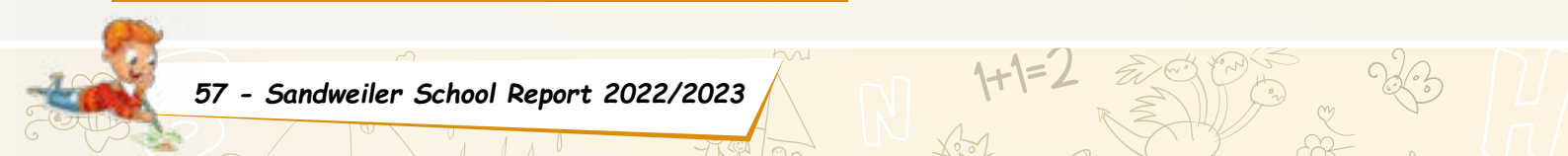
Class Photos 2021/2022



Early childhood: SCHUMACHER-MÜLLER Anik, WEYAND-BACK Myriam



Early childhood: BERSCHIED-RONKAR Claudine, DE LA FUENTE Sandra





Cycle 1a: HOFFMANN-APEL Fabienne



Cycle 1b: MILLIM Valérie

Class Photos 2021/2022



Cycle 1c: SPELTZ Maryse



Cycle 1d: BEISSEL Jennifer



Cycle 2.1a: FRIDEN Tanya



Cycle 2.1b: GALES Nadine

Class Photos 2021/2022



Cycle 2.2a: BELLOT Josiane, SCHOSELER Yvette



Cycle 2.2b: WENIGER Martine



Cycle 3.1a: KIRSCH Olivia, KONSBRUCK-GRETER Joëlle



Cycle 3.1b: DINIS MARTINS Susana, CIRELLI Saskia

Class Photos 2021/2022



Cycle 3.2a: KARIGER Tanja, EISCHEN Linda



Cycle 3.2b: ROSENFELD Carole



Cycle 4.1a: RESSLINGER Carole



Cycle 4.1b: BARTHEL Sonja



Cycle 4.2a: HOFFMANN Dan

Departure of Cycle 4.2 Pupils

We wish all pupils success on their school path!



Cycle 4.2b: MEERPOHL Christophe

Practical Information

Address of the Mairie (town hall)

18, rue Principale L-5240 Sandweiler

Address postale

B.P. 11 L-5201 Sandweiler

T: 35 97 11 - 1 E: info@sandweiler.lu
F: 35 79 66 www.sandweiler.lu

Municipal Council

MASSARD-STITZ Simone, Mayor

E: simone.massard@sandweiler.lu

ROEDER Jean-Paul, Alderman

E: jean-paul.roeder@sandweiler.lu

PIETROPAOLO Gennaro, Alderman

E: gennaro.pietropaolo@sandweiler.lu

Breuer Jacqueline, councillor
Courtois Corine, councillor
Dumong Romain, councillor
Meysembourg Roger, councillor
Martin Patrick, councillor
Mousel Claude, councillor
Obertin Martine, councillor
Jean Lemmer, councillor

Reception

Blau-Scheitler Nicole
T: 35 97 11 - 201
E: nicole.blau@sandweiler.lu

Secretariat

Nardecchia Pascal
municipal secretary
T: 35 97 11 - 202
E: pascal.nardecchia@sandweiler.lu

Reinardt Claudine
deputy municipal secretary
T: 35 97 11 - 211
E: claudine.reinardt@sandweiler.lu

Wagener Joëlle
secretariat
T: 35 97 11 - 204
E: joelle.wagener@sandweiler.lu

Huesmann Lilly
secretariat
T: 35 97 11 - 219
E: liliane.huesmann@sandweiler.lu

Public relations

Schlienger Sébastien
T: 35 97 11 - 213
E: sebastien.schlienger@sandweiler.lu

Human resources

Wohles Anna
T: 359711-229
E: anna.wohles@sandweiler.lu

Population Office (Civil Registry)

Torres David
T: 35 97 11 - 203
F: 35 97 11 - 221
E: david.torres@sandweiler.lu

Schmit Marc
T: 35 97 11 - 208
F: 35 97 11 - 221
E: marc.schmit@sandweiler.lu

Education

Lang Sonja
service enseignement
T: 35 97 11 - 205
E: sonja.lang@sandweiler.lu

Municipal revenue

Reuter Georges
receveur communal
T: 35 97 11 - 215
E: georges.reuter@sandweiler.lu

Sarcevic Ivan
receveur communal
T: 35 97 11 - 230
E: ivan.sarcevic@sandweiler.lu

Technical Service Department

Secrétariat: Mischo Manuel
T: 35 97 11 - 214
E: technique@Sandweiler.lu

Goedert Claude
T: 35 97 11 - 218
E: claude.goedert@sandweiler.lu

Hoffmann Marc
T: 35 97 11 - 225
E: marc.hoffmann@sandweiler.lu

Nilles Pit
T: 35.97.11 - 217
E: pit.nilles@sandweiler.lu

Karametovic Džemal
T: 35.97.11 - 212
E: dzemal.karametovic@sandweiler.lu

Environmental service

Moersch Adrien
T: 35 97 11 - 224
E: adrien.moersch@sandweiler.lu

Sandweiler School

Bâtiment "Um Weier"
T: 35 97 11 - 1

Susana Dinis Martins, présidente du comité d'école
T: 621 502 421
E: susana.dinis@education.lu

Maison relais (Childcare centre)

Rachel Manderscheid
T: 35 97 11 - 403
T: 35 97 11 - 640
E: maison.relais@sandweiler.lu

Lidija Djurdjevic
T: 35 97 11 402
E: lidija.djurdjevic@sandweiler.lu

Stefanie (Steffi) Fritz
T: 35 97 11 641
E: stefanie.fritz@sandweiler.lu

Piwitsch Day Nursery

T: 35 69 49 41
E: creche@sandweiler.lu

Maison des Jeunes (Youth Centre)

T: 26 35 00 84
E: mdjsandweiler@inter-actions.lu



Use eco-friendly school stationery and office supplies!

Many environmentally-friendly products can be recognized by the "Clever akafen" label. Ecological supplies are those that:

- can be used for a long time
- can be repaired
- are non-toxic
- contain no or few dangerous pollutants
- can be recycled
- are packaged in an environmentally-friendly way
- have low energy consumption
- are sustainable

Please therefore use, for example:

- solar-powered calculators rather than battery-powered calculators
- notebooks, pads, folders and envelopes made from recycled paper and materials
- rulers and pencil sharpeners made of wood or metal
- solvent-free glues
- wooden pencils and wax crayons
- recycled PP punched pocket document holders

Positively assessed products and other information can be found at:
www.clever-akafen.lu



18, rue Principale
L-5240 Sandweiler

T: 35 97 11 - 1
F: 35 79 66

E: info@sandweiler.lu
www.sandweiler.lu

